

### PCT Member States (138) - as at 1st January 2008

An “international” or “PCT” patent application covers all countries/regions which are party to the Patent Cooperation Treaty (PCT) (“PCT Member States”) on the day the PCT application is filed, except those which the applicant has deliberately excluded or withdrawn. At present, the PCT covers most of the major industrial countries of the world, but notably not Taiwan, Thailand, Pakistan, Argentina, Venezuela, Chile and most of the Arab world. This sheet provides a current list of the PCT Member States. For more information about PCT applications, and the PCT process, see our information sheet entitled *PCT Applications*.

Albania - AL <sup>1</sup>	Ecuador - EC	Liechtenstein - LI (EP)	San Marino - SM
Algeria - DZ	El Salvador - SV	Lithuania - LT (EP)	Senegal - SN (OA) <sup>2</sup>
Angola - AO	Egypt - EG	Luxembourg - LU (EP)	Serbia - RS <sup>1,4</sup>
Antigua and Barbuda - AG	Equatorial Guinea - GQ (OA) <sup>2</sup>	Libyan Arab Jamahiriya - LY	Seychelles - SC
Armenia - AM (EA)	Estonia - EE (EP)		Sierra Leone - SL (AP)
Australia - AU	Finland - FI (EP)	Macedonia - MK <sup>1</sup>	Singapore - SG
Austria - AT (EP)	France - FR (EP) <sup>2</sup>	Madagascar - MG	Slovakia - SK (EP)
Azerbaijan - AZ (EA)		Malawi - MW (AP)	Slovenia - SI (EP) <sup>2</sup>
	Gabon - GA (OA) <sup>2</sup>	Malaysia - ML	South Africa - ZA
Bahrain - BH	Gambia - GM (AP)	Mali - ML (OA) <sup>2</sup>	Spain - ES (EP)
Barbados - BB	Georgia - GE	Malta - MT (EP) <sup>2</sup>	Sri Lanka - LK
Belarus - BY (EA)	Germany - DE (EP)	Mauritania - MR (OA) <sup>2</sup>	Sudan - SD (AP)
Belgium - BE (EP) <sup>2</sup>	Ghana - GH (AP)	Mexico - MX	Swaziland - SZ (AP) <sup>2</sup>
Belize - BZ	Greece - GR (EP) <sup>2</sup>	Moldova - MD (EA)	Sweden - SE (EP)
Benin - BJ (OA) <sup>2</sup>	Grenada - GD	Monaco - MC (EP) <sup>2</sup>	Switzerland - CH (EP)
Bosnia & Herzegovina - BA <sup>1</sup>	Guatemala - GT	Mongolia - MN	Syrian Arab Republic - SY
Botswana - BW (AP)	Guinea - GN (OA) <sup>2</sup>	Montenegro - ME <sup>4</sup>	
Brazil - BR	Guinea-Bissau - GW (OA) <sup>2</sup>	Morocco - MA	Tajikistan - TJ (EA)
Bulgaria - BG (EP)		Mozambique - MZ (AP)	Tanzania - TZ (AP)
Burkina Faso - BF (OA) <sup>2</sup>	Honduras - HN		Togo - TG (OA) <sup>2</sup>
	Hungary - HU (EP)	Namibia - NA	Trinidad and Tobago - TT
Cameroon - CM (OA) <sup>2</sup>		Netherlands - NL (EP) <sup>2</sup>	Tunisia - TN
Canada - CA	Iceland - IS (EP)	New Zealand - NZ	Turkey - TR (EP)
Central African Rep. - CF (OA) <sup>2</sup>	India - IN	Nicaragua - NI	Turkmenistan - TM (EA)
Chad - TD (OA) <sup>2</sup>	Indonesia - ID	Niger - NE (OA) <sup>2</sup>	
China - CN	Ireland - IE (EP) <sup>2</sup>	Nigeria - NG	Uganda - UG (AP)
Colombia - CO	Israel - IL	Norway - NO (EP)	Ukraine - UA
Comoros - KM	Italy - IT (EP) <sup>2</sup>		United Arab Emirates - AE
Congo - CG (OA) <sup>2</sup>	Japan - JP	Oman - OM	United Kingdom - GB (EP)
Costa Rica - CR		Papua New Guinea - PG	United States of America - US
Côte d'Ivoire - CI (OA)	Kazakhstan - KZ (EA)	Philippines - PH	Uzbekistan - UZ
Croatia - HR (EP)	Kenya - KE (AP)	Poland - PL (EP)	
Cuba - CU	North Korea - KP	Portugal - PT (EP)	Vietnam - VN
Cyprus - CY (EP) <sup>2</sup>	South Korea - KR		Zambia - ZM (AP)
Czech Republic - CZ (EP)	Kyrgyzstan - KG (EA)	Romania - RO (EP)	Zimbabwe - ZW (AP)
		Russian Federation - RU (EA)	
Denmark - DK (EP)	Lao People's Dem. Rep. - LA	St Kitts and Nevis - KN	
Dominica - DM	Latvia - LV (EP) <sup>2</sup>	St Lucia - LC	
Dominican Republic - DO	Lesotho - LS (AP)	St Vincent & Grenadines - VC	
	Liberia - LR		

#### Regional Patents

**European Patent (EP)<sup>3</sup>:** AT, BE, BG, CH, CY, CZ, DE, DK, EE, ES, FI, FR, GB, GR, HR, HU, IE, IS, IT, LI, LT, LU, LV, MC, MT, NL, NO, PO, PT, RO, SE, SI, SK, TR (Extension possible for: AL, BA, MK, RS)

**Eurasian Patent (EA):** AM, AZ, BY, KG, KZ, MD, RU, TJ, TM

**OAPI (African Intellectual Property Organisation) Patent (OA):** BF, BJ, CF, CG, CI, CM, GA, GN, GQ, GW, ML, MR, NE, SN, TD, TG

**ARIPO (African Regional Industrial Property Organisation) Patent (AP):** GH, GM, KE, LS, MW, MZ, SD, SL, SZ, TZ, UG, ZM, ZW

<sup>1</sup> Extension of European Patent possible.

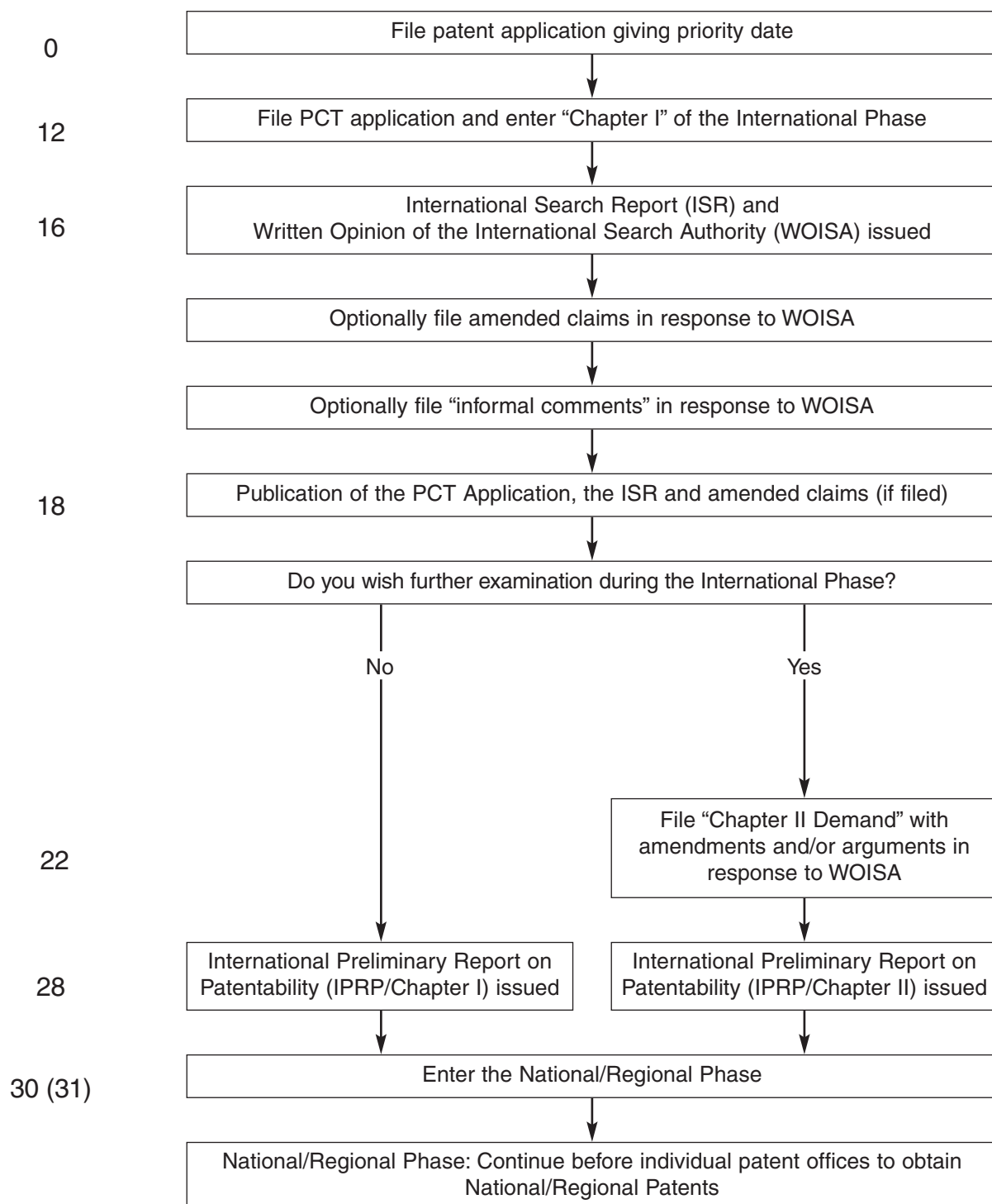
<sup>2</sup> May only be designated for a Regional Patent (the “national route” via the PCT has been closed).

<sup>3</sup> EP does not include Andorra or San Marino.

<sup>4</sup> On 3rd June 2006, the former state of Serbia & Montenegro (YU) divided into the Republic of Serbia (RS) and the Republic of Montenegro (ME).

## PROCESS OF A TYPICAL PCT APPLICATION

### TIME IN MONTHS



This information is simplified and must not be taken as a definitive statement of the law or practice. For more information on Mewburn Ellis LLP and other intellectual property matters, please contact us or visit our website at [www.mewburn.com](http://www.mewburn.com).

Mewburn Ellis LLP is a Limited Liability Partnership registered in England (no. OC306749). Registered Office at York House, 23 Kingsway, London WC2B 6HP

**LONDON**  
York House  
23 Kingsway  
London WC2B 6HP  
Tel: 020 7240 4405  
Fax: 020 7240 9339

**BRISTOL**  
22-24 Queen Square  
Bristol  
BS1 4ND  
Tel: 0117 945 1234  
Fax: 0117 926 5692

**MANCHESTER**  
Bridgewater House  
Whitworth Street  
Manchester M1 6LT  
Tel: 0161 247 7722  
Fax: 0161 247 7766

**CAMBRIDGE**  
Newnham House  
Cambridge Business Park  
Cambridge CB4 0WZ  
Tel: 01223 420383  
Fax: 01223 423792