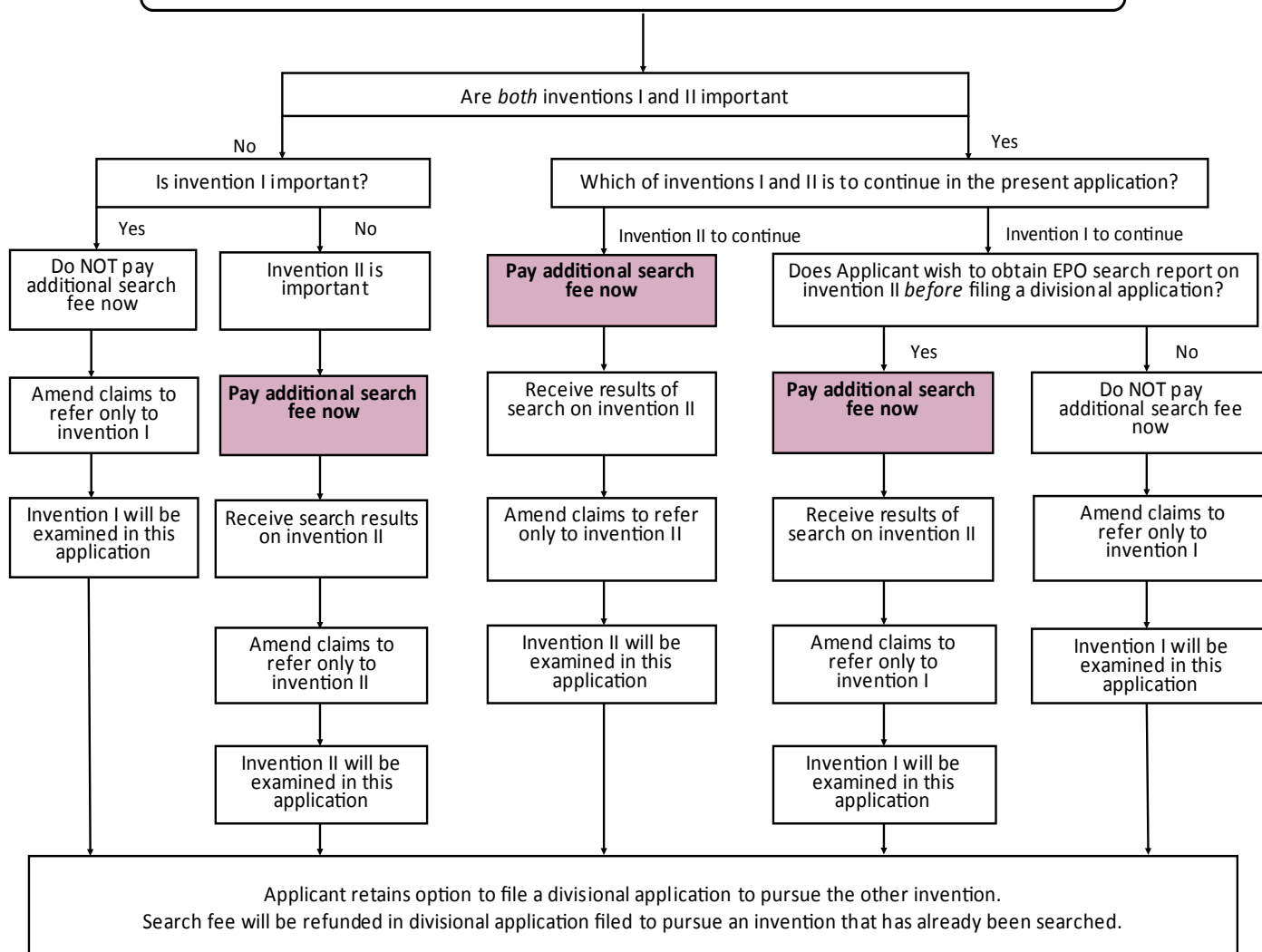


## European Regional Phase Patent Applications: Early stage procedure where an authority other than the EPO acted as the ISA

For an International (PCT) application that enters the regional phase at the EPO where an authority other than the EPO carried out the International search, the EPO will perform a *supplementary* search for each application. The EPO may find a lack of unity of invention, irrespective of the results of the International search, and will search the first invention mentioned in the claims, giving the Applicant the opportunity to pay further search fees for other inventions identified

Where a unity of invention objection is raised by the EPO during the supplementary search stage, it is possible for the Applicant to pay one or more search fees and to choose which invention they wish to pursue in the European regional phase

- EPO partial supplementary search report defines “inventions” (claim groups) I and II
- Only invention I is searched



## Contact Us

For more information on Mewburn Ellis LLP and other intellectual property matters, please visit our website at [www.mewburn.com](http://www.mewburn.com); email [firstname.lastname@mewburn.com](mailto:firstname.lastname@mewburn.com) or [mail@mewburn.com](mailto:mail@mewburn.com)